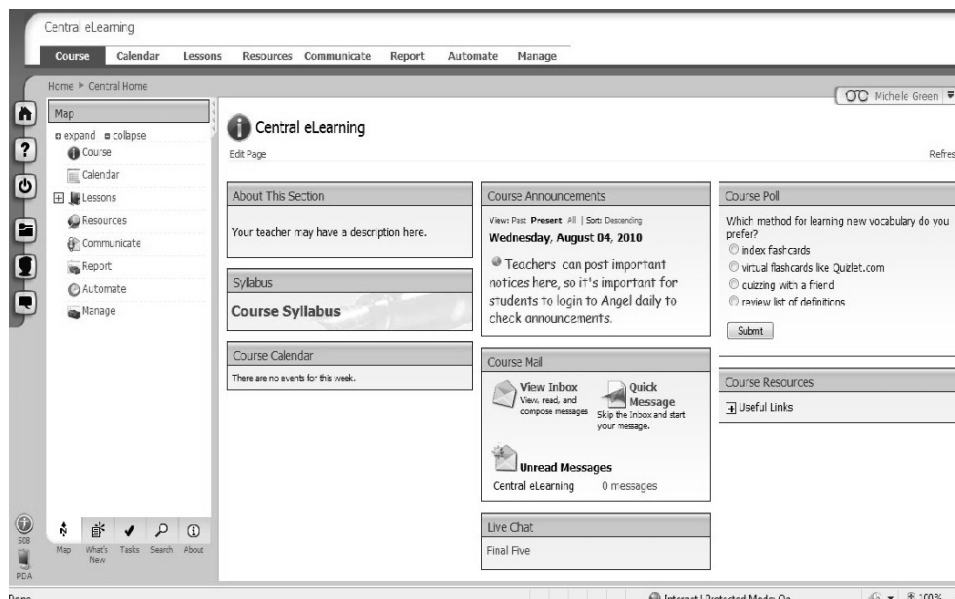


ANGEL Information for Parents

What is Angel? A web-based application providing a secure environment for online collaboration and communication tools. Not only is Angel a delivery system for instruction and assessment, it allows coaches, club sponsors and counselors to communicate with students without disrupting instructional time.



How are teachers using Angel?

This varies from teacher to teacher. The possibilities are numerous and include: posting the syllabus, maintaining a class calendar or agenda, posting assignments, resources and assessments, communicating through email or announcements and interactive assignments such as polls, surveys, wikis, blogs and forum discussions.

How will my child access Angel? Angel is accessed from any computer with an internet connection by going to <http://evsc.angellearning.com>. Students log into their account using the same username and password they use to sign on the netbook. Should your child change his or her netbook password, it may take overnight for the Angel password to synchronize.

If you don't have wireless internet access at home, your child will not be able to access Angel so it's important that any homework or make-up work assignments be opened at school and saved to the hard drive. This way your child can still access the work when off line. Then the next time he or she is on campus, they can log on and submit their saved work through Angel.

Wireless Access

At school, your child's netbook will automatically connect to the WSN, an internal network. Away from school, the netbooks are able to join wired and wireless networks provided you know the password if it is a secured network. Details are varied - please consult your internet provider for further assistance.